



VIRGINIA BEACH CITY PUBLIC SCHOOLS

AHEAD OF THE CURVE

Department of Curriculum and Instruction

Office of Secondary Instructional Services

**World History and Geography
Part I (to 1500 A.D.)**

SOCIAL STUDIES SKILL-BASED TEST 1

August 2003

Directions: Read each question carefully and select the best answer. Mark your answer choice in the appropriate place on your answer.

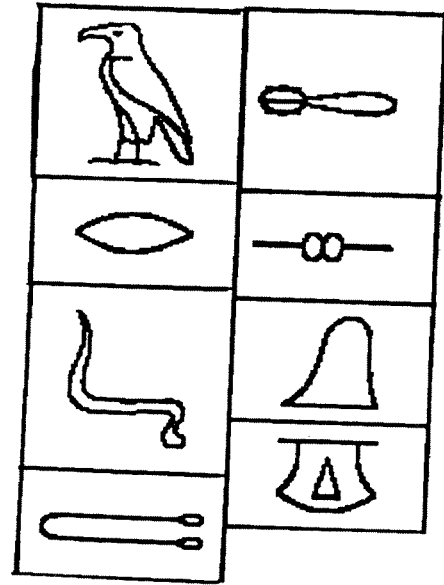
- 1 During the New Stone Age, people learned to do all of the following *except* —
 - A grow crops
 - B make cloth
 - C read and write
 - D domesticate animals

- 2 Civilization first developed in —
 - F Mexico
 - G Egypt
 - H Peru
 - J Mesopotamia

- 3 Which of the following is *not* a characteristic of a civilization?
 - A Cities
 - B Writing
 - C Nomadic hunters
 - D Social classes

- 4 Why are food surpluses necessary for the development of specialized work?
 - F Only cities with abundant food supplies have large populations with the variety of talents needed for specialization.
 - G Extra food must be produced so specialized workers, such as priests, can use it as temple offerings.
 - H A surplus of food must be produced to free others from having to grow their own food, thereby giving them time for specialization.
 - J Additional food must be provided for the armies that protect specialized workers.

Use the chart below and your knowledge of social studies to answer question 5.

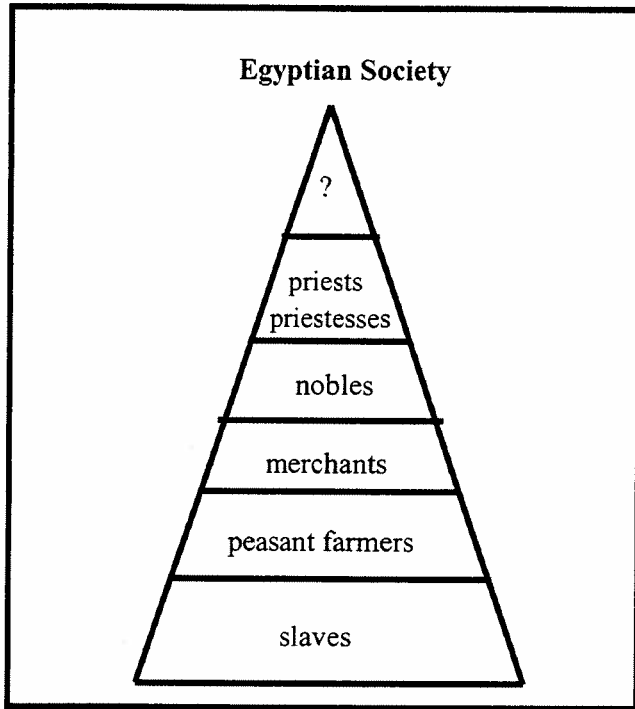


- 5 The ancient writing pictured above is called —
 - A cataracts
 - B hieroglyphics
 - C cuneiform
 - D calligraphy

- 6 Which geographic feature fostered the development of early civilizations in China, Egypt, and Mesopotamia?
 - F Large mineral deposits
 - G Mild climates
 - H Accessible rivers
 - J High mountains

- 7 The Fertile Crescent extended from the —
 - A Pacific Ocean to the Hwang He River
 - B Red Sea to the Nile Delta
 - C Persian Gulf to the Mediterranean Sea
 - D Bay of Bengal to the Indus River

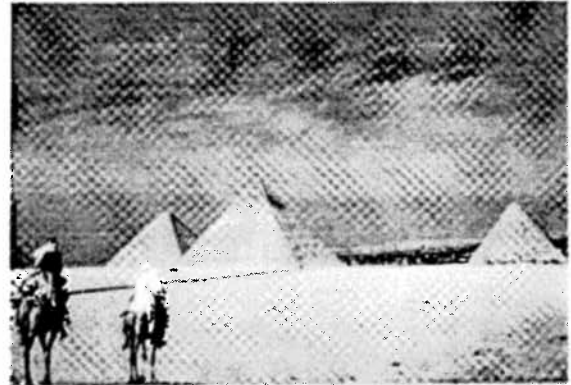
Use the diagram below and your knowledge of social studies to answer question 8.



8 Which of the following *best* completes the diagram?

- F Emperor
- G Vizier
- H Shogun
- J Pharaoh

Use the photograph below and your knowledge of social studies to answer question 9.



9 The structures shown in the photograph are called —

- A pyramids
- B ziggurats
- C obelisks
- D synagogues

10 Alexander the Great conquered an empire that stretched from —

- F Macedonia to Greece
- G Greece to Asia Minor
- H Egypt to Persia
- J Greece to the Indus Valley

Use the excerpts from the Code of Hammurabi and your knowledge of social studies to answer questions 11 and 12.

21. If a man make a breach in [breaks into] a house, they shall put him to death in front of that breach, and they shall bury him there.
25. If a fire breaks out in a man's house and a man who goes to extinguish it cast his eye on the household property of the owner of the house, and take the household property of the owner of the house, that man shall be thrown into the fire.
26. If either an officer or a constable who is ordered to go on an errand of the king do not go, or if he hire a substitute and he carry out his task, that officer or constable shall be put to death. His hired substitute shall take himself his house.
128. If a man takes a wife and do not draw up a contract with her, that woman is not a wife.

11 Laws 21 and 25 deal with the Babylonian view of—

- A protection of property rights
- B responsibility and duty
- C family relationships
- D enforcement of contracts

12 What law suggests that the power of the king was absolute?

- F Law 21
- G Law 25
- H Law 26
- J Law 128

Use the excerpt in the box below and your knowledge of social studies to answer questions 13 and 14.

I will give you many descendants, and some of them will be kings. You will have so many descendants that they will become nations. I will keep my promise to you and your descendants in the future generations as an everlasting covenant. I will be your God and the God of your descendants.

The Book of Genesis

13 In the passage above, the word *covenant* means —

- A a bet
- B an agreement
- C a disagreement
- D a curse

14 From this passage, there is evidence to support that the Hebrews were —

- F atheistic
- G agnostic
- H polytheistic
- J monotheistic

15 Which of the following *best* describes how the Greeks adapted to their mountainous environment?

- A Adopting the Phoenician alphabet
- B Living in small, isolated communities
- C Worshipping the goddess Athena
- D Following a peaceful way of life

16 The Greek word *polis* refers to —

- F an independent political unit
- G democratic government
- H a community of close relatives
- J a large clan

17 The Greek myths were important because these stories explained the—

- A coming of the Dark Ages to Greece
- B creation of the universe and the mysteries of nature
- C adventures of the Spartans
- D growth of the Greek dynasty and empire

Use the photograph below and your knowledge of social studies to answer question 18.



18 The structure pictured above is the —

- F Parthenon
- G Colosseum
- H Forum
- J Basilica

19 The first Athenian law code was drawn up by —

- A Pericles
- B Poseidon
- C Xerxes
- D Draco

20 The ancient Greeks developed all of the following forms of government *except* —

- F democracy
- G oligarchy
- H monarchy
- J theocracy

Use the information in the box below and your knowledge of social studies to answer question 21.

I will give no deadly medicine to anyone if asked . . .

21 Which of the following is the *most likely* source of the quote?

- A Pythagoras
- B Pericles
- C Archimedes
- D Hippocrates

22 Who was *not* a Roman god or goddess?

- F Zeus
- G Jupiter
- H Apollo
- J Mars

23 A list of the Homeric epics would include —

- A *Oedipus Rex* and *The Odyssey*
- B *The Iliad* and *The Odyssey*
- C *Work and Days* and *The Republic*
- D *The Prince* and *King Lear*

24 One of the greatest accomplishments of Roman engineering was the —

- F design for columns
- G flying buttress
- H aqueduct
- J minaret

25 Who led the Roman army during the conquest of Gaul and the British Isles?

- A Julius Caesar
- B Pompey
- C Augustus Caesar
- D Hannibal

26 The Pax Romana is considered the Golden Age of Rome because it was a time when Rome —

- F won control of Italy
- G enjoyed stable government
- H was ruled by generals
- J adopted a democratic form of government

27 Romance languages of Europe such as French and Spanish were derived from —

- A Greek
- B Egyptian
- C Etruscan
- D Latin

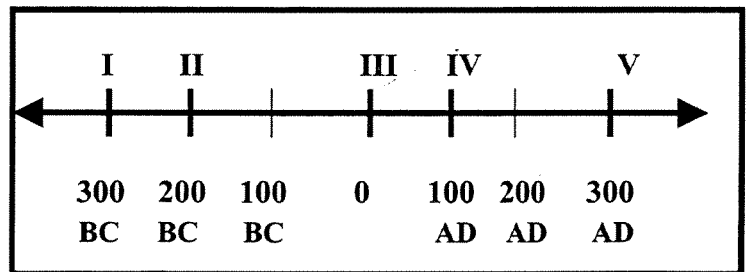
28 Apostles and missionaries played an important role in early Christianity because they —

- F were the first popes
- G wrote the Nicene Creed
- H stopped the persecution begun by Nero
- J established the first churches

29 Early Christianity appealed to many people because it —

- A called for an end to the Roman Empire
- B recognized all people as equal before God
- C allowed people to follow mystery religions
- D allowed women to become bishops

Use the timeline and your knowledge of social studies to answer question 30.



30 The life time of Jesus Christ would be placed between —

- F I and II
- G II and III
- H III and IV
- J IV and V

31 Historians date the fall of the Roman Empire at —

- A 44 B.C.
- B 122 A.D.
- C 284 A.D.
- D 476 A.D.

32 Roman law is important today because it—

- F shows why the empire finally fell apart
- G was extremely harsh and unfair to conquered peoples
- H did not protect the rights of people accused of crimes
- J developed ideas of justice that are the basis of our legal system

33 The Byzantine Emperor Justinian is *best* remembered for his achievements in the field of—

- A law
- B religion
- C art
- D literature

34 Constantinople became the center of the Byzantine Empire because —

- F the Pope made it the capital of the Christian world
- G it was the religious center for the Muslims
- H its location made it the crossroads of Europe and Asia
- J it was geographically isolated from surrounding empires

Read the excerpt that follows and use your knowledge of social studies to answer question 35.

Being on campaign is the best life in the world: feeling the wind on my face while my horse flies over the land, then facing the enemy knowing that our reputation has already traveled ahead of us.

35 The *most likely* author of this excerpt would be a follower of —

- A Huitzilopochtli
- B Akhenaton
- C Mansa Musa
- D Genghis Khan

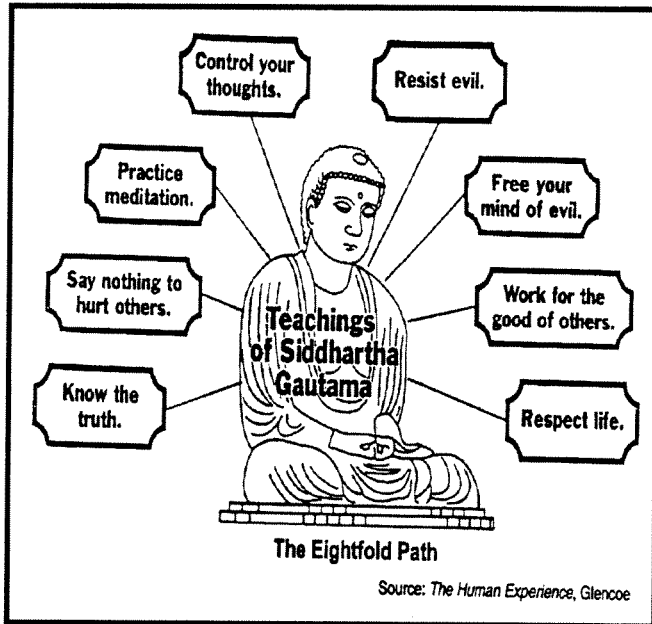
36 The *first* Indian civilization developed in the —

- F Deccan Plateau
- G Indus River Valley
- H Ganges River Valley
- J Hindu Kush Mountains

37 Which of the following connected China to the Western World and Rome?

- A Grand Canal
- B Suez Canal
- C Royal Road
- D Silk Road

Use the drawing below and your knowledge of social studies to answer question 38.



38 The information in the drawing represents the basic beliefs of —

- F Hinduism
- G Taoism
- H Shintoism
- J Buddhism

39 Which belief systems spread from China to Japan?

- A Buddhism and Shintoism
- B Hinduism and Buddhism
- C Confucianism and Hinduism
- D Buddhism and Confucianism

Use the information in the boxes and your knowledge of social studies to answer question 40.

I
Stated that the gods decided who was entitled to rule.

II
Explained natural disasters as divine signs.

III
Justified overthrowing weak leaders

40 Which statements above accurately describe the Mandate of Heaven?

- F I and II
- G I and III
- H II and III
- J I, II, and III

41 Candidates for the Chinese civil service needed a thorough knowledge of —

- A science and mathematics
- B the Confucian classics
- C the teachings of Buddha
- D geography and history

42 The Great Wall of China was built to protect China from invasion by —

- F Huns
- G nomadic tribes
- H Japanese samurai
- J Russian Cossacks

Use the picture below and your knowledge of social studies to answer question 43.



43 What type of structure is shown above?

- A Mosque
- B Pagoda
- C Cathedral
- D Ziggurat

Use the information in the boxes below and your knowledge of social studies to answer question 44.

I	II
Belief in reincarnation	Belief in one God
III	IV
Giving charity to the poor	Making a holy pilgrimage

44 Which of the items above is *not* a characteristic of Islam?

- F Box I
- G Box II
- H Box III
- J Box IV

45 At its height, the Islamic empire included all of the following *except* —

- A Persia
- B North Africa
- C Spain
- D Italy

46 The division between Sunni and Shiite Muslims began with a disagreement over —

- F the succession of a leader
- G the role of women in Islam
- H a decision to invade Constantinople
- J changes in worship rituals

47 A major contribution of scholars from the Islamic Empire was —

- A inventing the decimal system
- B preserving the ancient texts of the Quran
- C preserving much of the learning of the ancient Greek world
- D inventing the Cyrillic alphabet

48 The spread of Islam into the kingdoms of Ghana and Mali resulted from —

- F imperial conquest
- G dynastic ties
- H international trade
- J ethnic conflicts

49 Where did the *first* civilization in China develop?

- A In Manchuria
- B Along the Yangtze River
- C Along the Hwang He River
- D In the foothills of the Himalayas

50 Which of the following mountain ranges are located in northern India?

- F Andes
- G Alps
- H Urals
- J Himalayas

Read the information in the chart below and your knowledge of social studies to answer question 51.

Faith	Sacred Text
Christianity	The Bible
Judaism	The Torah
Islam	The Quran
Hinduism	?

51 Which of the following *best* completes the chart?

- A *The Vedas*
- B *The Analects*
- C *The Epic of Gilgamesh*
- D *The Way of Virtue*

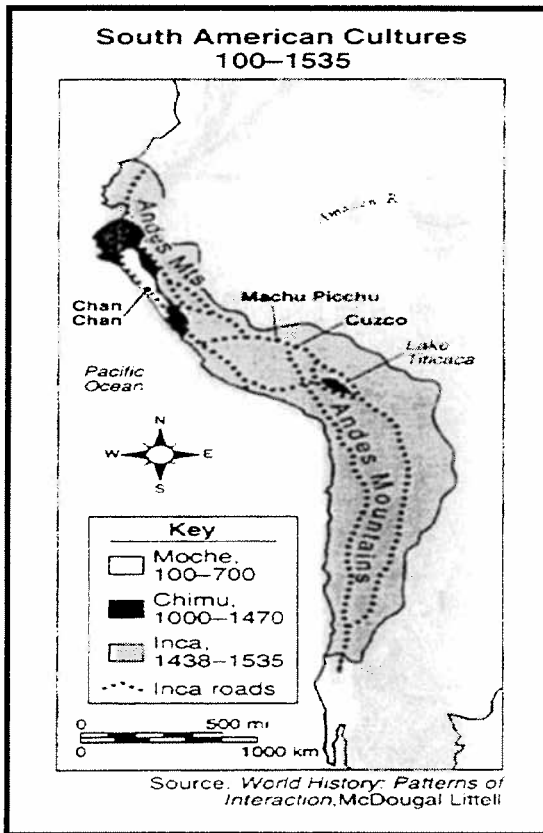
Read the information in the box and use your knowledge of social studies to answer question 52.

RELIGIOUS BELIEFS	
I	Human beings are doomed forever to suffer their own fate.
II	There is only one god, and no other gods should be worshipped.
III	Each person is reborn again and again until spiritual perfection is achieved.
IV	Although many gods and goddesses are worshipped, Zeus is the father of all gods.

52 Which of the statements above *most accurately* describes Hinduism?

- F Statement I ✗
- G Statement II ↗
- H statement III
- J Statement IV ✗

Use the map below and your knowledge of social studies to answer question 53.



53 Which of the following conclusions about the Incan empire is *best* supported by the map?

- A An extensive road system connected all parts of the empire.
- B The trade of the Incan empire depended on many seaports.
- C A tropical climate existed throughout the empire.
- D The entire empire was unified by language.

54 The main export of the African kingdom of Ghana was —

- F salt
- G slaves
- H gold
- J diamonds

55 The feudal system developed because of a need for —

- A protection from invaders
- B manors for food
- C churches for religion
- D a central authority

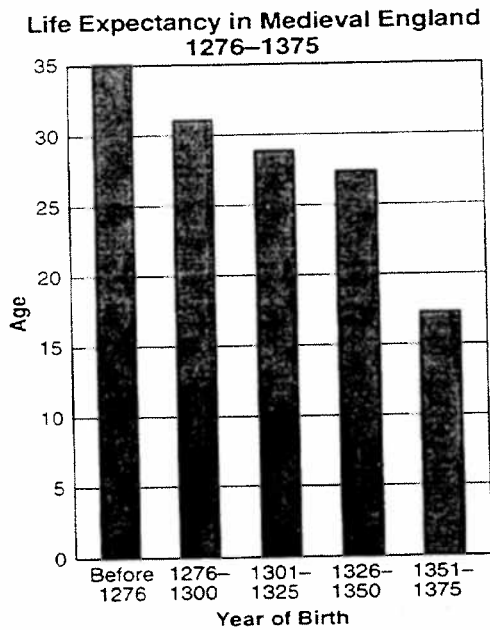
56 Feudal society is *best* characterized by —

- F dominant local lords, slaves, and small armies
- G weak central government, vassals, and fiefs
- H active trade, agricultural production
- J invasion, strong central authority

57 The economy of the manor system was based on —

- A trade among many villages
- B farming and self-sufficiency
- C metalworking
- D herding and weaving

Use the graph below and your knowledge of social studies to answer question 58.



Source: *World History Strategies*, Glencoe (adapted)

58 The sharp decline in life expectancy between 1351 and 1375 was *most likely* due to—

- F famine
- G plague
- H war
- J immigration

Use the graphic below and your knowledge of social studies to answer question 59.

I. _____

- A Desire to be released from feudal ties
- B Defend the Holy Land
- C Forgiveness of sins
- D Desire for wealth from the Middle East

59 Which of the following is the *best* title for the outline?

- A Causes for the Fall of Rome
- B Causes of the Agricultural Revolution
- C Reasons for Exploration and Colonization
- D Reasons for the Crusades

Read the information in the box and use your knowledge to social studies to answer question 60.

To obtain the general consent of the realm for the assessment of an aid we will cause the archbishops, bishops, abbots, earls, and greater barons to be summoned individually by letter. . . to come together on a fixed day and at a fixed place. . .

Magna Carta
Clause 14, 1215

60 The passage best supports the beginnings of the —

- F Roman Senate
- G English Parliament
- H Athenian Council of 500
- J Japanese shogunate

Use the information in the box below and your knowledge of social studies to answer question 61.

Revival of Greek and Roman culture
Economic growth of Italian city-states
Humanism

61 The characteristics in the box are most closely associated with the —

- A Holy Roman Empire
- B Byzantine Empire
- C Feudalism
- D Renaissance

Use the painting below and your knowledge of social studies to answer question 62.



62 The picture above was painted by—

- ~~F~~ A da Vinci
- ~~G~~ B Michelangelo
- ~~H~~ C Raphael
- J D Dürer